



Previous Year

Solved Question Paper

I.I.T. JAM EXAM 2019

BIOLOGICAL SCIENCE

Examination

(Original Question Paper with Answer Key)

JOINT ADMISSION TEST FOR M.Sc IN IITs AND IISc



For more question papers, please visit: www.easybiologyclass.com

For more question papers, please visit: www.easybiologyclass.com

Paper Specific Instructions

1. The examination is of 3 hours duration. There are a total of 60 questions carrying 100 marks. The entire paper is divided into three sections, **A**, **B** and **C**. All sections are compulsory. Questions in each section are of different types.
2. **Section – A** contains a total of 30 **Multiple Choice Questions (MCQ)**. Each MCQ type question has four choices out of which only **one** choice is the correct answer. Questions Q.1 – Q.30 belong to this section and carry a total of 50 marks. Q.1 – Q.10 carry 1 mark each and Questions Q.11 – Q.30 carry 2 marks each.
3. **Section – B** contains a total of 10 **Multiple Select Questions (MSQ)**. Each MSQ type question is similar to MCQ but with a difference that there may be **one or more than one** choice(s) that are correct out of the four given choices. The candidate gets full credit if he/she selects all the correct answers only and no wrong answers. Questions Q.31 – Q.40 belong to this section and carry 2 marks each with a total of 20 marks.
4. **Section – C** contains a total of 20 **Numerical Answer Type (NAT)** questions. For these NAT type questions, the answer is a real number which needs to be entered using the virtual keyboard on the monitor. No choices will be shown for these type of questions. Questions Q.41 – Q.60 belong to this section and carry a total of 30 marks. Q.41 – Q.50 carry 1 mark each and Questions Q.51 – Q.60 carry 2 marks each.
5. In all sections, questions not attempted will result in zero mark. In **Section – A** (MCQ), wrong answer will result in **NEGATIVE** marks. For all 1 mark questions, 1/3 marks will be deducted for each wrong answer. For all 2 marks questions, 2/3 marks will be deducted for each wrong answer. In **Section – B** (MSQ), there is **NO NEGATIVE** and **NO PARTIAL** marking provisions. There is **NO NEGATIVE** marking in **Section – C** (NAT) as well.
6. Only Virtual Scientific Calculator is allowed. Charts, graph sheets, tables, cellular phone or other electronic gadgets are **NOT** allowed in the examination hall.
7. The Scribble Pad will be provided for rough work.

SECTION – A

MULTIPLE CHOICE QUESTIONS (MCQ)

Q. 1 – Q.10 carry one mark each.

Q.1 Tropic hormones or tropins are secreted by

- (A) adrenal medulla (B) anterior pituitary
(C) hypothalamus (D) posterior pituitary

Ans. B

Q.2 Which one of the following is necessary for evolution to be driven by genetic drift?

- (A) Migration
(B) Natural selection
(C) Rapid mutation
(D) Small population size

Ans. D

Q.3 Biotin deficiency can arise due to consumption of diet rich in

- (A) raw eggs (B) raw fish (C) raw meat (D) seaweeds

Ans. AQ.4 In a plant species, yellow seed colour (Y) is completely dominant over white (y). A genetic cross between plants with yellow seeds and plants with white seeds yielded a progeny population of 48 yellow-seeded and 52 white-seeded plants. The genotypes of the yellow-seeded and the white-seeded parent plants, respectively, are most likely to be

- (A) YY and yy (B) Yy and yy (C) Yy and Yy (D) YY and Yy

Ans. B

Q.5 Thomas Cech discovered RNA self-splicing in

- (A) *Caenorhabditis elegans* (B) *Saccharomyces cerevisiae*
(C) *Schizosaccharomyces pombe* (D) *Tetrahymena thermophila*

Ans. D

Q.6 The core glycan moiety of N-linked glycoproteins contains

- (A) fifteen mannose units
(B) five N-acetyl glucosamine units
(C) three glucose units
(D) three N-acetyl neuraminic acid units

Ans. C

Q.7 Organophosphate pesticides kill insects by inhibiting

- (A) acetylcholinesterase (B) carbonic anhydrase
(C) DNA polymerase (D) pyruvate kinase

Ans. A

Q.8 Which one of the following conditions leads to an approximately 50-fold increase in RNA transcription of the *lac* operon? (CRP stands for cyclic AMP [cAMP] receptor protein)

P: Binding of CRP-cAMP complex to a site near the *lac* promoter

Q: Binding of CRP-cAMP complex to a site near the *lac* operator

R: Lac repressor bound to the *lac* operator

S: Lac repressor not bound to the *lac* operator

- (A) Q and S (B) P and R (C) P and S (D) Q and R

Ans. C

Q.9 Which one of the following photosynthetic organisms does not release oxygen as a by-product of the light reaction?

(A) Algae

(B) Cyanobacteria

(C) *Euglena*

(D) Sulphur bacteria

Ans. D

Q.10 In plant systematics, which one of the following species belongs to the branch at the very base of the angiosperm phylogenetic tree?

(A) *Amborella trichopoda*

(B) *Illicium floridanum*

(C) *Magnolia grandiflora*

(D) *Nymphaea stellata*

Ans. A

Q. 11 – Q. 30 carry two marks each.

Q.11 The molecular weight (Da) of the zwitterionic form of the peptide GAGAGAGA is closest to

(A) 512

(B) 530

(C) 656

(D) 782

Ans. B

Q.12 If $y = x^2$, then dx/dy is

(A) $2x$

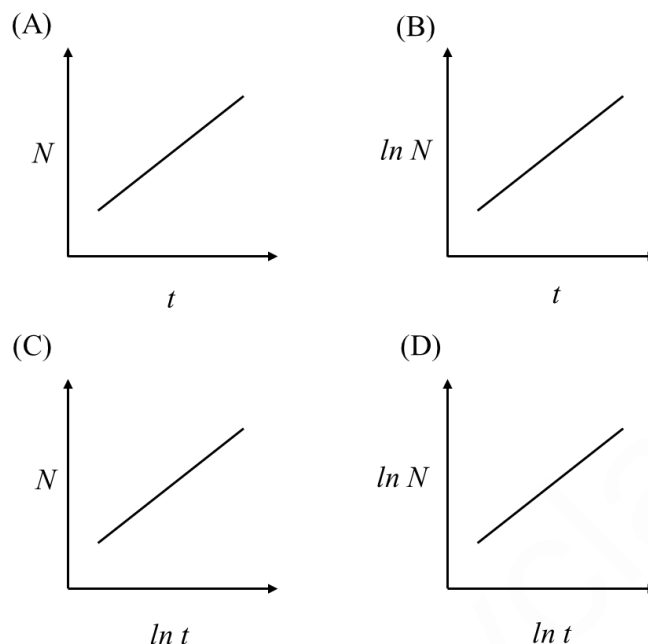
(B) $2y$

(C) $\pm \frac{1}{2\sqrt{x}}$

(D) $\pm \frac{1}{2\sqrt{y}}$

Ans. D

Q.13 Which one of the following plots represents exponential growth?



Ans. B

Q.14 Naive T lymphocytes can be stimulated by the activated dendritic cells that bear

- (A) a specific antigenic peptide alone
- (B) a specific antigenic peptide and CD11c
- (C) a combination of co-stimulatory molecules and a non-specific antigenic peptide
- (D) a combination of co-stimulatory molecules and a specific antigenic peptide

Ans. D

Q.15 In rearrangement of immunoglobulin heavy chain, N-nucleotides

- (A) are added by the enzyme terminal deoxynucleotidyl transferase
- (B) form a palindromic sequence that is added to the end of gene segment
- (C) form a palindromic sequence that is added to the single stranded end of the coding DNA
- (D) are added by the enzyme DNA-dependent DNA polymerase

Ans. A

Q.16 Which one of the following matches is **CORRECT** between the microorganisms given in **Group A** with their requirement of oxygen in **Group B**?

Group A

- (P) *Micrococcus luteus*
- (Q) *Spirillum volutans*
- (R) *Methanobacterium formicicum*

Group B

- (i) Obligate anaerobe
- (ii) Facultative aerobe
- (iii) Obligate aerobe
- (iv) Microaerophilic

- (A) P-iii, Q-iv, R-i
- (B) P-iii, Q-ii, R-iv
- (C) P-ii, Q-iv, R-i
- (D) P-ii, Q-iii, R-i

Ans. A

Q.17 Which one of the following is **TRUE** for the function $y = x^2 + 1$?

- (A) It does not intersect the X-axis at all
- (B) It intersects the X-axis at $x = -1$
- (C) It intersects the X-axis at $x = +1$
- (D) It is tangential to the X-axis

Ans. A

Q.18 Match the metabolic pathways in **Group A** with corresponding enzymes in **Group B**

Group A

Group B

- | | |
|--------------------------------|--|
| (P) Glycolysis | (i) Pyruvate carboxylase |
| (Q) Gluconeogenesis | (ii) Enolase |
| (R) Hexose monophosphate shunt | (iii) Isocitrate lyase |
| (S) Glyoxylate cycle | (iv) Glucose-6-phosphate dehydrogenase |

- (A) P-i, Q-iv, R-iii, S-ii
- (C) P-ii, Q-iv, R-i, S-iii

- (B) P-ii, Q-i, R-iv, S-iii
- (D) P-iii, Q-iv, R-ii, S-i

Ans. B

Q.19 Which one of the following statements is **INCORRECT** for competitive inhibition in an enzyme catalysed reaction?

- (A) Apparent K_m increases
- (B) Apparent V_{max} decreases
- (C) Inhibitor binds to the active site
- (D) Inhibition decreases with an increase in [S]

Ans. B

Q.20 In a human cell, β -oxidation of a saturated fatty acyl CoA molecule produced 8 acetyl CoA, 7 H_2O and 28 ATP. The oxidised fatty acyl CoA is

- (A) octanoyl CoA
- (B) oleoyl CoA
- (C) palmitoyl CoA
- (D) stearoyl CoA

Ans. C

Q.21 Match the diseases in **Group A** with their corresponding causative microorganisms in **Group B**

Group A

Group B

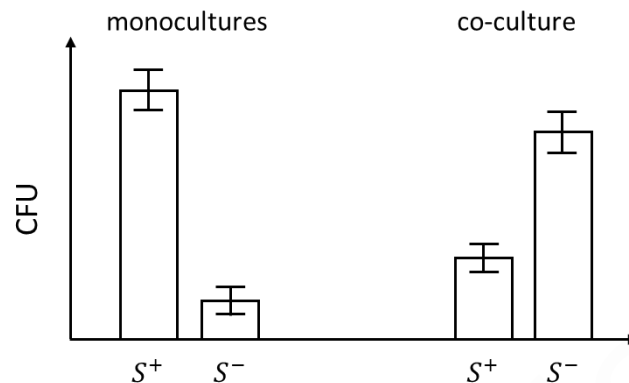
- | | |
|-----------------------|-----------------------------------|
| (P) Hansen's disease | (i) <i>Mycobacterium leprae</i> |
| (Q) Sleeping sickness | (ii) <i>Treponema pallidum</i> |
| (R) Syphilis | (iii) <i>Borrelia burgdorferi</i> |
| (S) Lyme disease | (iv) <i>Trypanosoma brucei</i> |

- (A) P-i, Q-iii, R-ii, S-iv
- (C) P-ii, Q-iv, R-iii, S-i

- (B) P-iv, Q-ii, R-i, S-iii
- (D) P-i, Q-iv, R-ii, S-iii

Ans. D

- Q.22 In an experiment to examine the role of exopolymeric substances (EPS) on bacterial growth, a wild-type strain (S^+) and a mutant strain deficient in EPS production (S^-) were grown in monocultures as well as in co-culture (in equal proportion of S^+ and S^-). The CFU (colony forming units) of these cultures measured after 24 hours are shown in the following figure.



Which one of the following phenomena best describes the interaction between the wild-type strain (S^+) and mutant strain (S^-)?

- (A) Amensalism (B) Cooperation (C) Commensalism (D) Mutualism

Ans. B

- Q.23 If a fossil that has been discovered recently contains 0.2% of the ^{14}C ($t_{1/2} = 5,730$ years) that was present when the fossil was formed, then the age of the fossil in years is likely to fall in the range of

- (A) 25,000 – 35,000
 (B) 35,000 – 45,000
 (C) 45,000 – 55,000
 (D) 55,000 – 65,000

Ans. C

- Q.24 A photosynthetic algal filament is illuminated with white light that has passed through a prism such that the left and the right ends of the filament receive violet and red lights, respectively. The amount of oxygen released by this filament will be

- (A) high at the left end and progressively reducing towards the right
 (B) high at the right end and progressively reducing towards the left
 (C) high at both ends and progressively reducing towards the middle
 (D) high in the middle and progressively reducing towards both ends

Ans. C

- Q.25 Which one of the following statements is **TRUE** for dynein and kinesin family of motor proteins?

- (A) Both dynein and kinesin are only (+) end directed motors
 (B) Dynein is (-) end directed and kinesin can be either (+) or (-) end directed
 (C) Both dynein and kinesin are only (-) end directed motors
 (D) Kinesin is (+) end directed and dynein can be either (+) or (-) end directed

Ans. B

- Q.26 Which one of the following statements is **TRUE** about flagella?

- (A) Flagella in both prokaryotes and eukaryotes are made of flagellin
 (B) Flagella in prokaryotes are made of flagellin while in eukaryotes are made of tubulin
 (C) Flagella in both prokaryotes and eukaryotes are made of tubulin
 (D) Flagella in prokaryotes are made of tubulin while in eukaryotes are made of flagellin

Ans. B

Q.27 Caffeine is a plant-based drug that

- (A) does not intercalate into DNA double helix
- (B) inhibits cyclic AMP (cAMP) phosphodiesterase activity
- (C) inhibits epinephrine response
- (D) reduces the level of cellular cAMP

Ans. B

Q.28 2,4-Dinitrophenol (DNP) is an uncoupler that

- (A) cannot freely pass through plasma membrane
- (B) enhances ATP production
- (C) is a non-toxic compound at high dose
- (D) makes the inner mitochondrial membrane leaky to protons

Ans. D

Q.29 Which one of the following statements is **INCORRECT** about the prokaryotic and eukaryotic organisms on the Earth?

- (A) Prokaryotes have more sequence diversity in their DNA than do eukaryotes
- (B) Prokaryotes outnumber eukaryotes
- (C) Prokaryotes survive in more extreme environments than do eukaryotes
- (D) The cumulative biomass of prokaryotes is less than that of eukaryotes

Ans. D

Q.30 Which is the **CORRECT** chronological order, from the least recent to the most recent, of the four evolutionary events listed below?

- P. Earliest evidence of terrestrial arthropods
- Q. Appearance of Ediacaran fauna
- R. Extinction of the large, non-flying dinosaurs
- S. Origin of mammals

- (A) P, Q, R, S (B) Q, P, R, S (C) P, Q, S, R (D) Q, P, S, R

Ans. D

SECTION - B

MULTIPLE SELECT QUESTIONS (MSQ)

Q. 31 – Q. 40 carry two marks each.

Q.31 Which of the following changes would cause a shift in the membrane potential of a neuronal cell from -70 mV to -50 mV?

- (A) A decrease in K^+ permeability
- (B) An increase in Na^+ permeability
- (C) An increase in K^+ permeability
- (D) A decrease in Na^+ permeability

Ans. A, B

Q.32 In this system of two reactions, $A \rightarrow 2B$ and $B \rightarrow 2C$, which of the following statements is/are **TRUE** at steady-state?

- (A) The rate of consumption of A is four times the rate of production of C
- (B) The rate of consumption of B is twice the rate of production of C
- (C) The rate of production of B is the same as the rate of consumption of B
- (D) The rate of production of C is four times the rate of consumption of A

Ans. C, D

Q.33 The function $f(x) = x^2 - 6x + 8$ is positive when

- (A) $x < 2$
- (B) $2 < x < 4$
- (C) $-6 \leq x \leq 8$
- (D) $x > 4$

Ans. A, D

Q.34 A typical α -helix in a native polypeptide chain has

- (A) 3.6 amino acid residues per turn
- (B) a rise of 5.4 \AA per turn
- (C) high proline and glycine content
- (D) ϕ value of -57° and ψ value of -47°

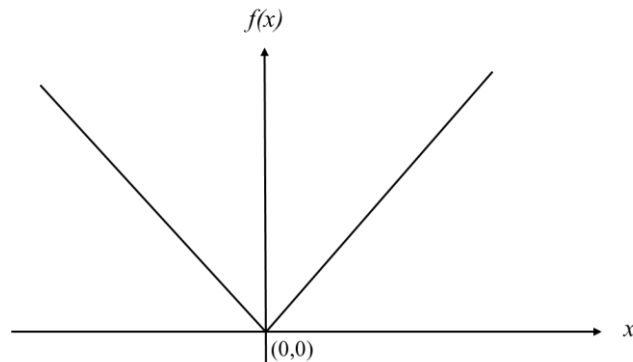
Ans. A, B, D

Q.35 Insulin action on a target cell causes an increase in

- (A) acetyl CoA carboxylase
- (B) glucokinase
- (C) glucose-6-phosphate dehydrogenase
- (D) GLUT4 transporter

Ans. A, B, C, D

- Q.36 Which of the following statements is/are **TRUE** for the function $f(x)$ shown in the figure given below?



- (A) $f(x)$ is continuous at $x=0$
 (B) $f(x)$ is not continuous at $x=0$
 (C) $f(x)$ is differentiable at $x=0$
 (D) $f(x)$ is not differentiable at $x=0$

Ans. A, D

- Q.37 Which of the following coenzymes is/are present in the pyruvate dehydrogenase complex?

- (A) Coenzyme A (B) Lipoate
 (C) Pyridoxal phosphate (D) Thiamine pyrophosphate

Ans. A, B, D

- Q.38 Which of the following disorders in humans is/are due to a defect/deficiency in enzymes involved in the urea cycle?

- (A) Alkaptonuria (B) Argininemia
 (C) Argininosuccinic acidemia (D) Phenylketonuria

Ans. B, C

- Q.39 Ricin, a protein from castor beans, causes toxicity in humans by

- (A) depurinating the 23S ribosomal RNA
 (B) inactivating the 60S ribosomal subunit
 (C) inhibiting the elongation factor eEF2
 (D) intercalating DNA

Ans. B

- Q.40 During photosynthesis in higher plants, oxygen is produced

- (A) by splitting water
 (B) in Photosystem I
 (C) in Photosystem II
 (D) only in the presence of light

Ans. A, C, D

**SECTION – C
NUMERICAL ANSWER TYPE (NAT)**

Q. 41 – Q. 50 carry one mark each.

Q.41 The function $f(x) = \sin(x) e^{-x}$ is equal to zero in the range $0 < x < 2\pi$ for $x =$ ____ radians (round off to 2 decimal places)

Ans. 3.13 to 3.15

Q.42 A spherical bacterium has a diameter of 2 μm . Its volume to surface area ratio is equal to ____ μm (round off to 2 decimal places)

Ans. 0.32 to 0.34

Q.43 The value of the integral $\int_0^\infty e^{-y} dy$ is equal to ____ (round off to 2 decimal places)

Ans. 0.99 to 1.01

Q.44 The velocity of an enzyme-catalysed reaction following Michaelis–Menten kinetics, at the substrate concentration equal to $0.3 \times K_m$, is equal to ____ $\times V_{\max}$ (round off to 2 decimal places)

Ans. 0.22 to 0.24

Q.45 The angle (in degrees) between the hour hand and the minute hand of a 12-hour clock showing 6:30 is ____ (round off to 1 decimal place)

Ans. 14.9 to 15.1

Q.46 Values of $\Delta_f G^0$ (standard Gibbs free energy of formation) for molecules A, B, and C are -34 kJ/mol, 84 kJ/mol and -100 kJ/mol, respectively. The ΔG^0 for the reaction $A + B \rightarrow C$ would be ____ kJ/mol (round off to 1 decimal place)

Ans. -150.1 to -149.9

Q.47 A bacterial population in the log-phase grows from 4×10^6 cells to 8.64×10^6 cells in 20 minutes. The doubling time of the bacterium is ____ minutes (round off to 1 decimal place)

Ans. 17.9 to 18.1

Q.48 Tryptophan (Trp) is encoded by UGG, phenylalanine (Phe) is encoded by UUU and UUC, isoleucine (Ile) is encoded by AUU, AUC and AUA, and glycine (Gly) is encoded by GGU, GGC, GGA and GGG. The maximum number of RNA segments with unique sequences that can encode the polypeptide Ile-Phe-Trp-Ile-Gly-Trp would be ____

Ans. 72

Q.49 In an examination consisting of 100 multiple choice questions, each question has four choices out of which only one is correct. A student scores +1 for each correct answer and a negative mark of 1/5 for each wrong answer. The correct choices are uniformly distributed across the four choices. If an unprepared student always selects the first choice for each question, then the expected value of the student's total score in the examination would be ____ (round off to 1 decimal place)

Ans. 9.9 to 10.1

- Q.50 In a large insect population, males and females are equally abundant. If a student collects four insects from this population at random, the probability that all of them are male is ____ (round off to 2 decimal places)

Ans. 0.05 to 0.07

Q. 51 – Q. 60 carry two marks each.

- Q.51 An *E. coli* cell with an internal volume of 2 femtolitres contains 10 molecules of a repressor protein in its cytosol. The concentration of the repressor protein is ____ nM (round off to 1 decimal place)

Ans. 8.2 to 8.4

- Q.52 The growth rate of a bacterial culture is given by $x \left(1 - \frac{x}{100}\right)$, where x is the density of the culture. The growth rate is maximum when the density is equal to ____ (round off to 1 decimal place)

Ans. 49.9 to 50.1

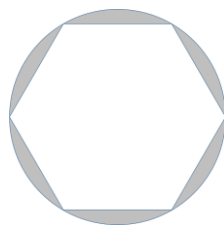
- Q.53 A hypothetical plant forms 10 leaves, each of which is perfectly circular with 10 cm diameter. If the total number of stomata made by all these leaves is 7.85×10^6 , then the stomatal density in these leaves would be ____ / mm² (round off to 1 decimal place)

Ans. 49.0 to 51.0

- Q.54 In a diploid population at Hardy–Weinberg equilibrium, the locus *A* has two alleles *A*₁ and *A*₂. If the frequency of *A*₁*A*₁ genotype is 0.01, then the frequency of the allele *A*₂ is ____ (round off to 2 decimal places)

Ans. 0.89 to 0.91

- Q.55 In the following figure, the radius of the circle circumscribing the regular hexagon is 2 cm. The area of the shaded region is ____ cm² (round off to 2 decimal places)



Ans. 3.15 to 2.20

- Q.56 The complete oxidation of one mole of palmitoyl CoA yields 23 moles of water and 16 moles of carbon dioxide. The amount of water that can be produced from 1 kg of tripalmitate is ____ mL (round off to 2 decimal places)

Ans. 1540 to 1542

Q.57 If x , y and z are all positive and $x + y + z = 9$, the maximum value of xyz is _____

Ans. 27

Q.58 $\lim_{x \rightarrow 1} \frac{x^2 - 1}{\sqrt{x} - 1} =$ _____

Ans. 4

Q.59 In the second-order reaction $2A \rightarrow B$, the initial concentration of A is 1.0 M and after 30 minutes, the concentration of A is 0.5 M. The rate constant of the reaction is _____ L/mol/h (round off to 2 decimal places)

Ans. 1.99 to 2.01

Q.60 Water from a full cylindrical vessel of height h and of unknown diameter is completely emptied to precisely fill two cylindrical vessels of the same diameter d and heights h and $3h$. The diameter of the original vessel is _____ $\times d$ (round off to 2 decimal places)

Ans. 1.99 to 2.01

END OF THE QUESTION PAPER

Print less... Save paper... Save trees....Save our Earth!

EBC

Please visit: www.easybiologyclass.com for:

- Lecture Notes
- Biology PPTs
- Biology MCQs
- Online Mock Tests (MCQ)
- Video Tutorials
- Practical Aids
- Model Question Papers of NET, GATE, DBT, ICMR Exams
- CSIR NET Life Sciences Previous Year Question Papers
- GATE Previous Year Question Papers
- DBT BET JRF Previous Year Question Papers
- ICMR JRF Entrance Exam Resources
- Jobs Notifications
- Higher Studies in Biology / Life Sciences
- Seminar / Workshop/ Conference Notifications
- And many more....



Please subscribe our **youtube** channel: **easybiologyclass**
<https://www.youtube.com/user/easybiologyclass/videos>



You can access more PDFs & PPTs from our **Slideshare** account
<http://www.slideshare.net/EasyBiologyClassEBC/>



Our sister concern: www.angiospermtaxonomy.com

For more question papers, please visit: www.easybiologyclass.com